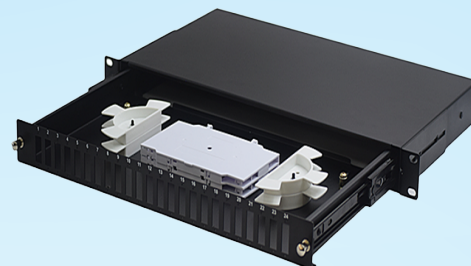


## RSFDP-X-XXXXX-XX-XX-X

# Fiber optic distribution panel (OTB: Optical terminal box)

- 19" & 21" standard rack mounted panel
- Easy to installation
- Electro-static spraying surface
- Sliding type and fixed type available
- Can include adapters with pigtails



PRFDP-X-XXXXX-XX-XX-X	19" & 21" Rack mounted fiber optic distribution panel
1 2 3 4 5 6 7	
*1 indicate the panel style: F: fixed type, S: swing type, P: sliding type	
*2 indicate the fiber core: 012=12c, 016=16c, 024=24c, 032=32c, 048=48c, 072=72c, 096=96c, 144=144c, 256=256c...	
*3 indicate the adapter style: SC=SC/UPC, SCA=SC/APC, DSC=DSC/UPC, DSCA=DSC/APC, LC=LC/UPC, LCA=LC/APC, DLC=DLC/UPC, DLCA=DLC/APC, QLC=QLC/UPC, QLCA=QLC/APC...	
*4 indicate the panel height: 1U=1U, 2U=2U, 3U=3U, 4U=4U...	
*5 indicate the adapter/pigtail suitable mode: 0=without adapter, 1=G652D, 2=OM1, 3=OM2, 4=OM3, 5=OM4, 6=G657A1, 7=SM G657A2, 8=SM G655C	
*6 indicate the pigtail: 0=no pigtail, 1=0.9mm pigtail 1m	
*7 indicate the color: 1=Black, 2=Grey, 3=Beige, 4: White	

### Dimensions

Width(mm)	482mm(19"), 533mm(21")
Height(mm)	1U, 2U, 3U..., according to the PN
Depth(mm)	160mm~260mm variable for 1U height 260mm for other height

### Material

Body	Cold rolled steel
Splice Tray	ABS

### Environmental data

Operation temperature	-25°C ~ +55°C
Storage temperature	-40°C ~ +70°C
2011/65/EC (RoHS)	Compliant

