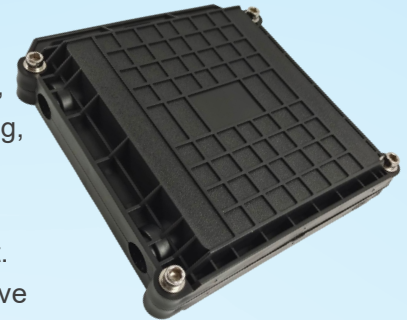


# Fiber Optic Splice Closure YY-WS05

## 1. Description:

The Model YY-WS05 FOSC is mainly used for optical fiber connection and protection. This kind of box is suitable for the connection of overhead, pipe and buried straight and branch. The box body and base are sealed with hoops and rubber. The closure casing is made of quality engineering plastics, and of good performance of anti-erosion against acid and alkali salt, anti-aging, as well as smooth appearance and reliable mechanical structure. The mechanical structure is reliable and has the performance of resisting wild environment and intensive climate changes and serious working environment. The splice trays (FOST) inside the closure are turn-able like booklets, and have adequate curvature radius and space for winding optical fiber to make sure the curvature radius for optical winding 40 mm. Each optical cable and fiber can be operated individually. The product can be opened again and reused after installation.



## 2. Features:

- (1) The size is reduced to 60% of the horizontal connecting box, which is more suitable for installation in pipeline, overhead, buried and other places where it is inconvenient to install the horizontal connecting box.
- (2) High-quality ABS/PP material is safe and durable, with good stability, cold and heat resistance, electrical insulation, chemical corrosion resistance, flame retardant and non-toxic.
- (3) The fish-tooth press piece can effectively protect the optical cable butt joint. The press-piece of PC optical cable adopts the design of upper and lower fish-teeth, which is tensile and anti-drag, and can effectively protect the optical cable butt joint.
- (4) Openscrew design tensile up to 2000N, so that the installation of optical fiber reinforced core is more convenient and better tensile, further protect the optical fiber cable docking.
- (5) The new ABS material is used to thicken and enlarge the fusion fiber disc, which makes the fusion of optical fiber more convenient and more durable to fully meet the construction needs of 2-in, 2-out 24-core and 48-core optical fiber fusion.
- (6) Multiple protection design structure is more robust, adapt to a variety of harsh environment of optical cables splicing, strong compression and tensile properties.

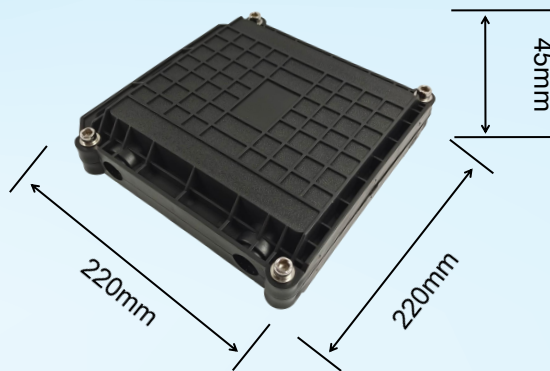
## 3. Specification:

Item No	YY-WS05
Max	2PCS 24C Splicing Trays
Ports	2 inlets 2 outlets
Material	PP/ABS
Diameter of Cable(mm)	8-13
Max. Number of Trays	2
Size	220mm(A)*220mm(B)*45mm(H)
Capacity	24C-48C
Weight (Kg)	About 0.603kg



Protection Grade	IP68
Air pressure	70~106KPa
Ambient temperature	-40°C~+80°C
Electric strength	15KV (DC)
Tensile force	> 1000N
Sealing of Shells	Silicon rubber
Box color	Black
Structure	Horizontal coupling box

## 4. Overall Dimension:



## 5. Ordering Information:

Code Name	Capacity (single core)	Description
YY-12C	24Core	Fiber Optic Closure IN-LINE 2IN-2OUT 24Core
YY-24C	24Core	Fiber Optic Closure IN-LINE 2IN-2OUT 48Core

including splice sleeve, cassettes, sealing tape, mounting sets and accessories.

## 6. Product display:

